



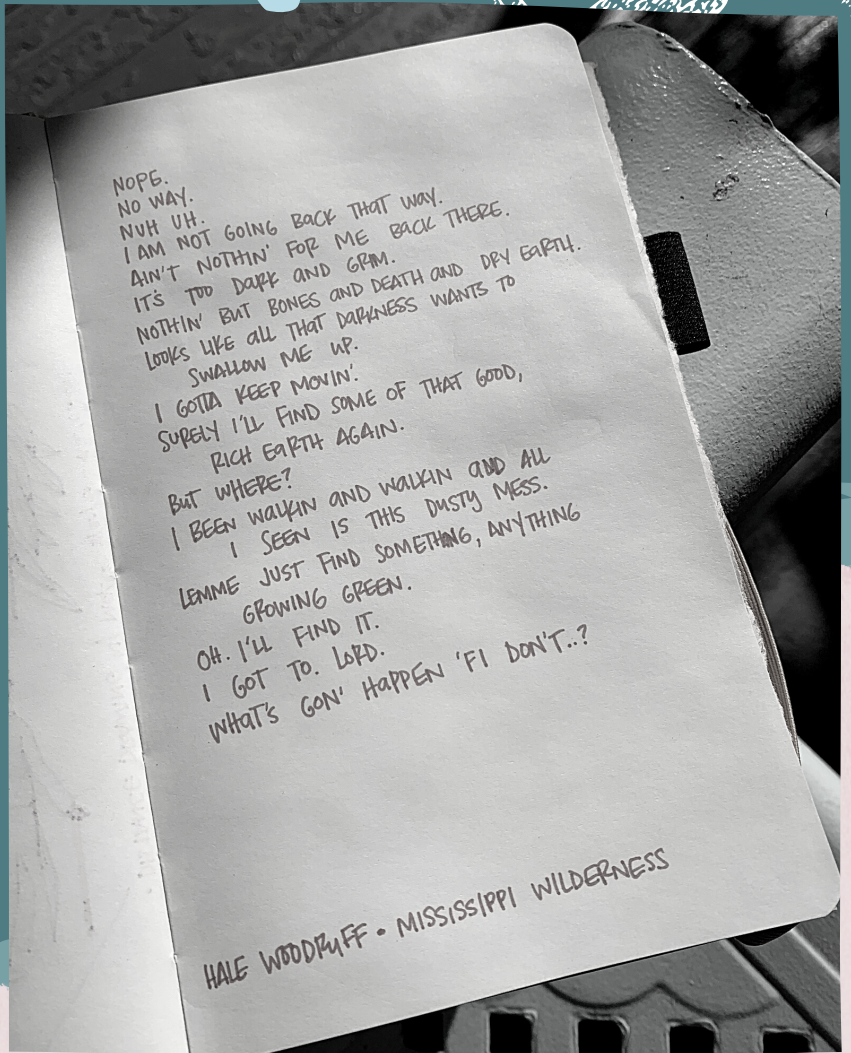
MISSISSIPPI  
MUSEUM OF  
ART

WRITING EXERCISE:

# Artful Storytelling



Hale Woodruff (American, 1900-1980), *Mississippi Wilderness*, ca. 1944, oil on primed canvas 22 x 27 1/2 in. Collection of Mississippi Museum of Art, Purchased with funds from Cheek Fund, Franks Fund, The Gallery Guild, Inc., Hederman Fund, Merle Tennyson Montjoy Fund, and Rexford T. Brown Fund



NOPE.  
NO WAY.  
NUH UH.  
I AM NOT GOING BACK THAT WAY.  
AIN'T NOTHIN' FOR ME BACK THERE.  
IT'S TOO DARK AND GRM.  
NOTHIN' BUT BONES AND DEATH AND DRY EARTH.  
LOOKS LIKE ALL THAT DARKNESS WANTS TO  
SWALLOW ME UP.  
I GOTTA KEEP MOVIN'.  
SURELY I'LL FIND SOME OF THAT GOOD,  
RICH EARTH AGAIN.  
BUT WHERE?  
I BEEN WALKIN AND WALKIN AND ALL  
I SEEN IS THIS DUSTY MESS.  
LEMME JUST FIND SOMETHING, ANYTHING  
GROWING GREEN.  
OH. I'LL FIND IT.  
I GOT TO. LORD.  
WHAT'S GON' HAPPEN 'FI DON'T..?

HALE WOODRUFF • MISSISSIPPI WILDERNESS



Field trip activity  
FAVORITE

*wonderful*

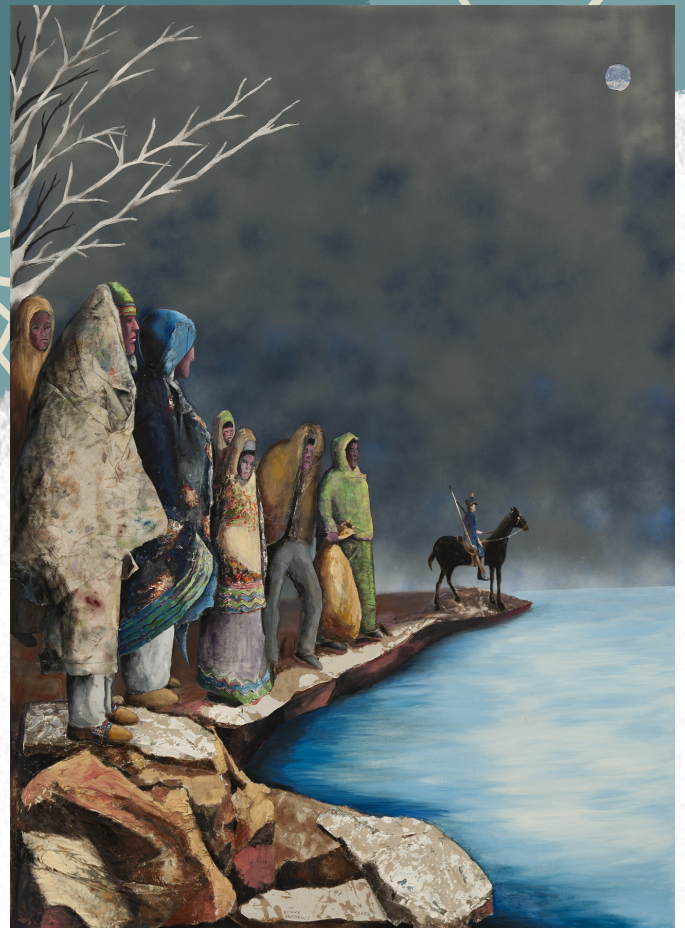
This activity can be modified for all ages.

This project is inspired by ekphrastic poetry.

→ Ekphrasis comes from the Greek word for description and is often used to talk about a work of art in vivid detail.

Consider elements of visual + verbal,  
such as:

- Pattern
- Texture
- Contrast
- Composition
- Perspective



Benny Andrews (American, 1930-2006) Mississippi River Bank (Trail of Tears Series), 2005 oil on canvas with painted fabric collage 70" x 50 1/2" x 3/4"

Take a moment to find an object (art or household item).

Ivy Billiot, Possum Family, 1995. painted wood and plastic, 7.875 x 10.75 x 8.25 in. Collection of the Mississippi Museum of Art, Jackson. Gift of Warren and Sylvia Lowe, 1997.105.



I chose this one!

Want to choose a work from our digitized collection? Find them on our website!



Gather writing materials.

Write down a list of descriptive information about the artwork/object, answering the questions:



What is the **SETTING?**



### SETTING:

An environment in which an event or story takes place. Setting could be simply descriptive, like a lonely cottage on a hill. Social conditions, time, location, weather, and surroundings are all different aspects of setting.

I imagine Possum Family is living outside on a sunny day!





Who are the  
CHARACTERS?



A CHARACTER

is a person,  
animal, being, creature,  
or thing in a story.

Writers use characters to  
perform  
the actions and speak  
dialogue, moving the  
story along a  
plot line.



There's a parent  
possum & possum  
babies.

**WAIT!**

**What's a possum  
baby called?!**



**RESEARCH TIME!**

# RESEARCH TIME



Possum (or opossum)  
males are called  
"JACK"

Possum females are  
called "JILL"

We're  
marsupials!

Possum babies  
are called "JOEYS"





Is there a PLOT?



PLOT:

The main idea or events of a play, novel, movie, or similar work. Plot is a literary term used to describe the events that make up a story, or the main part of a story.

Next, choose a NARRATOR:



A joey can narrate!

NARRATOR: The person from whose perspective a story is told.  
A narrator may be a character in the text or an outside voice.

# Start writing!

Begin by getting all your thoughts in writing. You can edit after!



## POSSUM FAMILY

I don't know, what's that?  
I'm just a joey on mom's back.  
We walk through the woods,  
to find the best marsupial foods.  
We're family-stacked!

I want to touch the ground!  
But there's an awful sound.  
We turn to face the sun  
And quickly we're left to run.  
We're safe, no one is around.

Some are scared of us,  
But we don't fuss.  
My nose is long,  
I sing a silly song,  
Go as we must.



Share your artful stories!

#MMAEDUATHOME #MMAEDU

#MUSEUMFROMHOME

#THEMUSEUMSCHOOLMMA

Or tag us! @msmuseumart



MISSISSIPPI  
MUSEUM OF  
ART