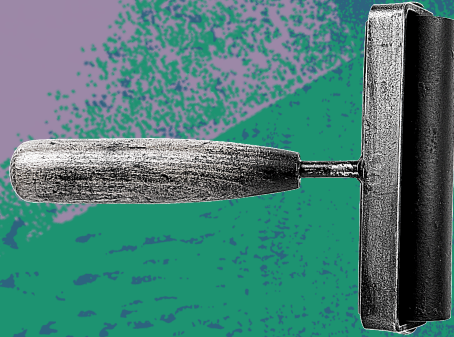
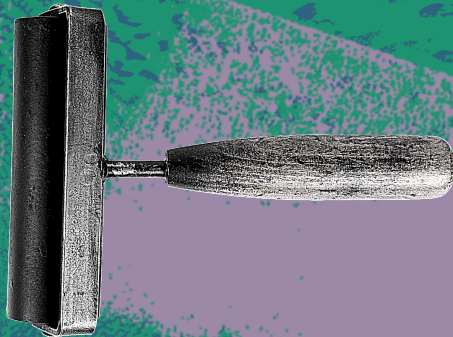




MISSISSIPPI
MUSEUM OF
ART



**COLLAGRAPH
PRINTING**





WHAT IS COLLAGRAPHY?

Collagraphy is a type of relief
printmaking in which collage
materials are glued to a
matrix

RELIEF PRINTING

printing from a raised image
[one example is a stamp]

MATRIX

the base from which
a print is made



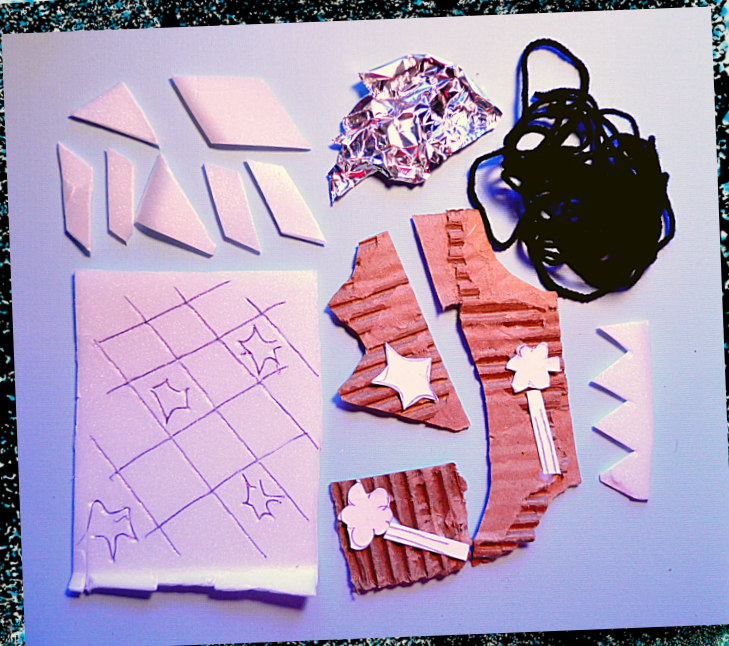
MISSISSIPPI
MUSEUM OF
ART

MATERIALS

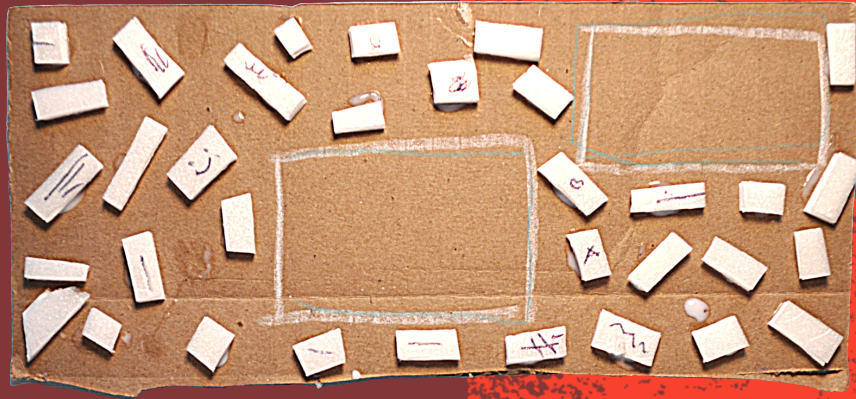
- ACRYLIC PAINT
- 2 PIECES OF CARDBOARD (JUICE/ MILK CARTONS WORK WELL)
- ROLLER (OR FOAM/PAINT BRUSH)
- TEXTURED COLLAGE MATERIALS
- SCRAP PAPER
- AN ENVELOPE
- HEAVY BOOK
- WOODEN SPOON
- SCISSORS
- GLUE

TEXTURED MATERIAL IDEAS

- HOUSEHOLD ITEMS LIKE CARDBOARD, PLASTIC, FOIL, YARN, BUBBLE WRAP, CHEESECLOTH
- ITEMS FROM NATURE LIKE LEAVES, BARK, STICKS



FRONT



BACK



1

CUT OUT TWO PIECES OF CARDBOARD THE SIZE OF YOUR DESIGN. THESE WILL BE YOUR MATRICES.



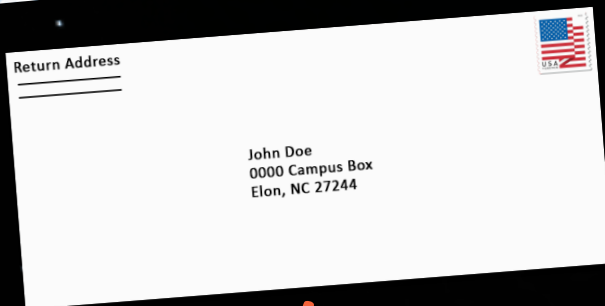
**WE'RE
DESIGNING OUR
PRINT TO FIT AN
ENVELOPE SO WE
CAN SEND
PERSONALIZED
LETTERS :)**

2

ARRANGE YOUR TEXTURED COLLAGE ITEMS INTO DESIGNS FOR EACH SIDE OF THE ENVELOPE AND GLUE THEM DOWN.

REMEMBER

**IN PRINTMAKING WE DESIGN IN REVERSE!
LETTERS AND NUMBERS NEED TO BE BACKWARDS ON YOUR MATRIX TO PRINT CORRECTLY.**



See how we reversed our front envelope design for the matrix!



FRONT



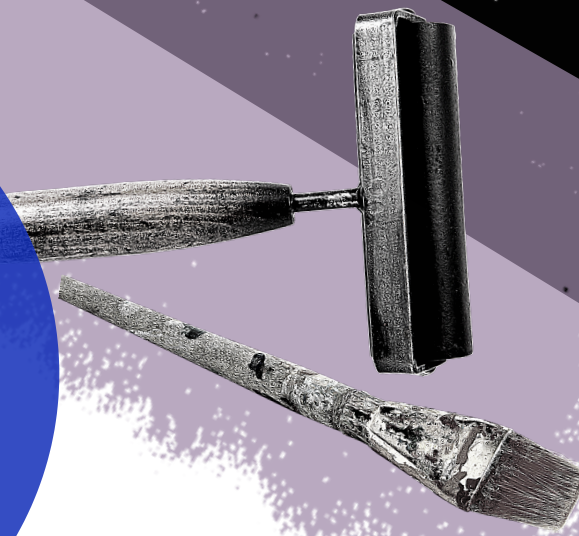
BACK



3

TAPE THE MATRIX DOWN TO KEEP IT STILL. USE A FOAM BRUSH TO DAB PAINT ON YOUR BASE.

**FOAM BRUSH
ALTERNATIVES:
BRAYERS OR
PAINT BRUSHES**



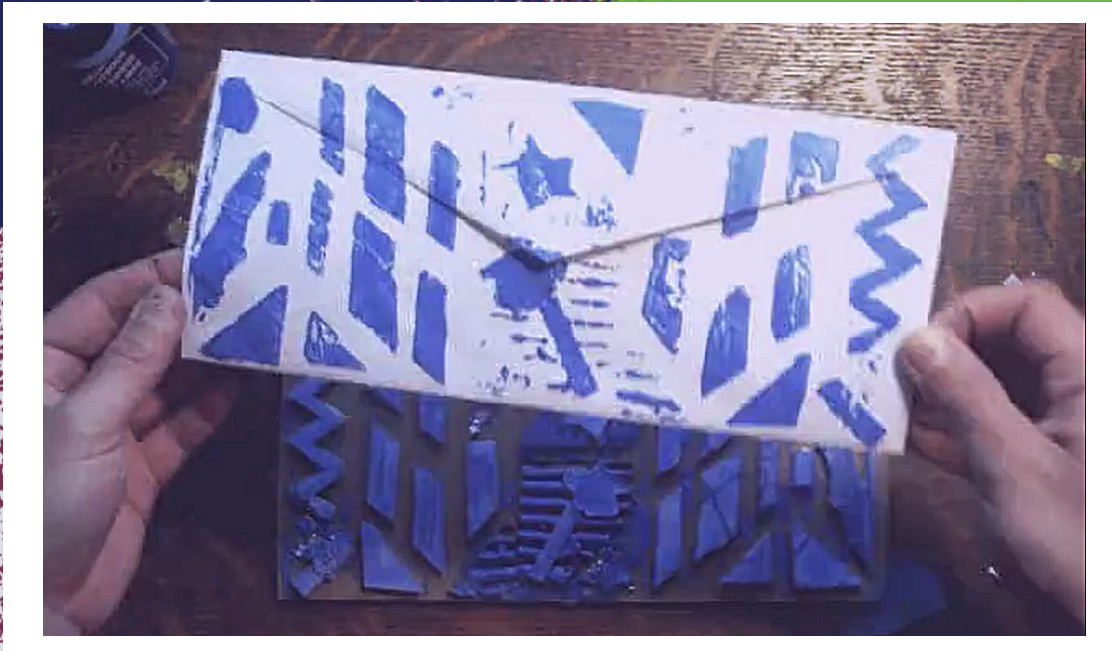
**DO A TEST PRINT
ON SCRAP PAPER
FIRST!**



4

**LINE UP YOUR PAPER AND APPLY PRESSURE BY
TRACING YOUR DESIGN WITH A WOODEN SPOON
AND/OR BY PRESSING DOWN WITH A HEAVY BOOK.**





5

**LIFT PRINT AND SET ASIDE TO DRY. PRINT
ADDITIONAL LAYERS OF COLOR AND/OR
REPEAT THE PROCESS FOR THE OTHER SIDE**



LAYER 1



LAYER 2



MISSISSIPPI
MUSEUM OF
ART



6

(OPTIONAL)

ONCE DRY, EMBELLISH YOUR ENVELOPE WITH
MARKERS OR COLORED PENCILS AND THEN MAIL A
LETTER TO A FRIEND!

SHARE WITH US

#MMAEDU

#MMAEDUATHOME

#MUSEUMFROMHOM

#THEMUSEUMSCHOOLMMA

