



MAKE YOUR OWN

PUZZLE



DID YOU KNOW?

Adult puzzles grew wildly popular during the Great Depression.

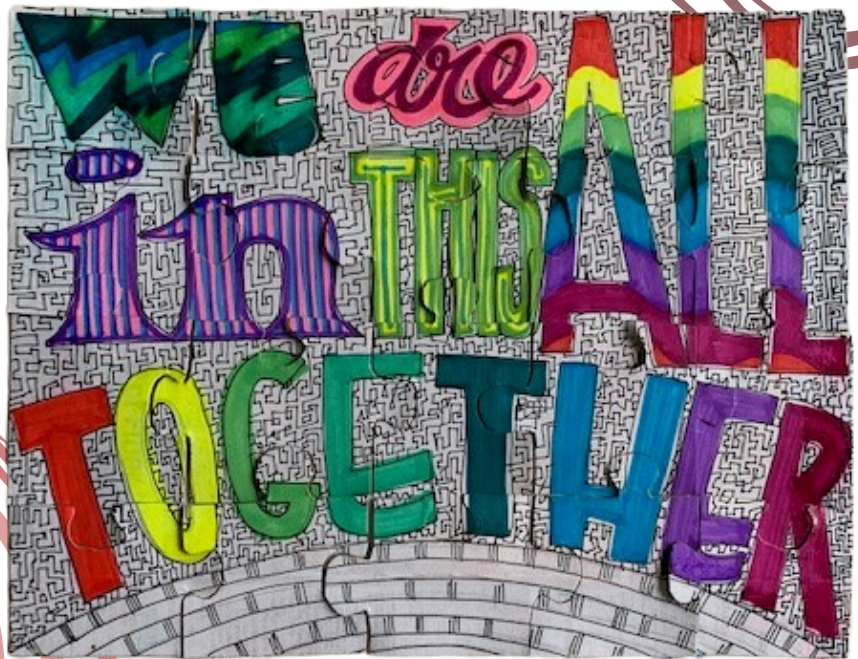
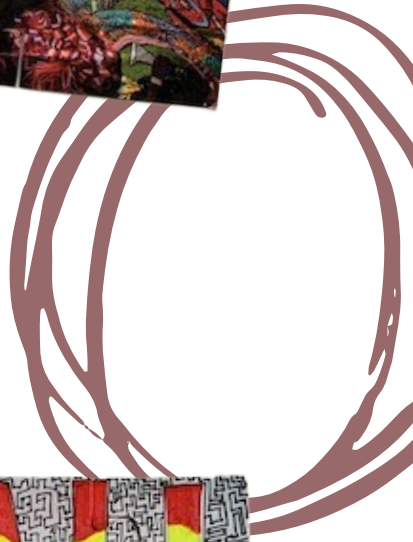
"With incomes depleted, home amusements like puzzles replaced the outside entertainment like restaurants and night clubs."

By 1933, 10 million puzzles were sold on average each week.

SOURCE:
[HTTPS://WWW.PUZZLEWAREHOUSE.COM/
HISTORY-OF-PUZZLES/](https://www.puzzlewarehouse.com/history-of-puzzles/)



You'll never get tired of old puzzles again. Today, we'll show you how to make your own!



LET'S GET STARTED!



PREP

by gathering your materials



WE SUGGEST REUSING
A CEREAL BOX!

MATERIALS

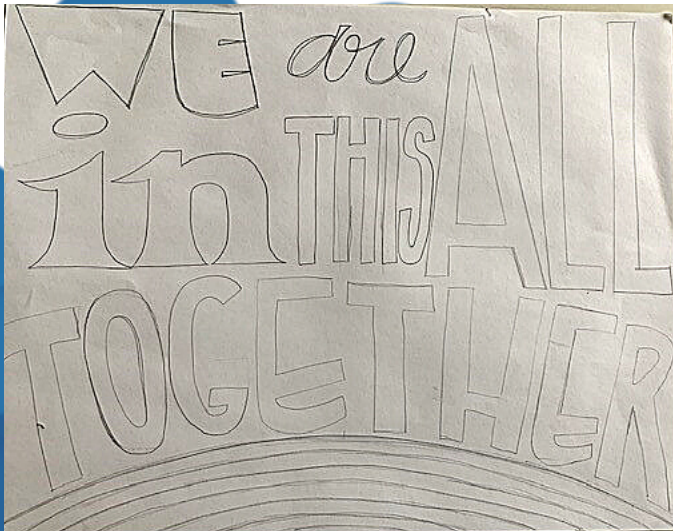
- Paper for drawing
- Recycled thin cardboard/paperboard
- Sharpened pencil
- Glue
- Scissors
- Crayons, colored pencils, or markers
- Magazine (optional)
- Coloring book/coloring sheets (optional)



SKIP THIS STEP IF YOU WANT TO USE AN EXISTING
IMAGE FOR THIS PROJECT

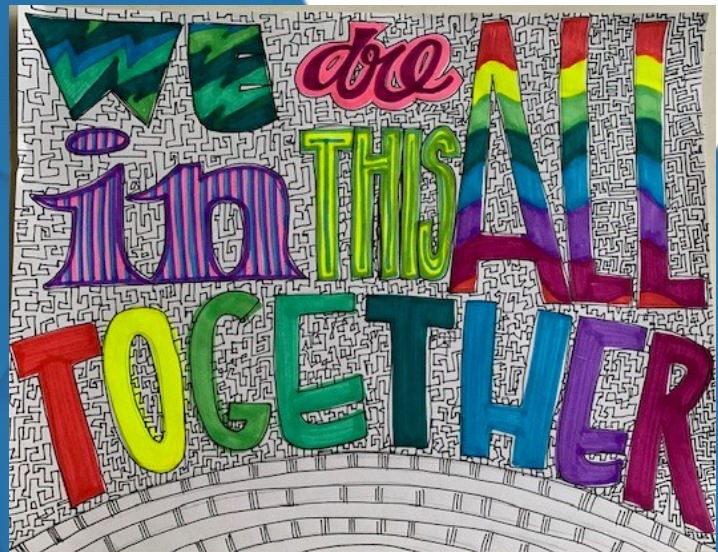


HOW TO CREATE YOUR OWN DESIGN



FILL YOUR PAPER
WITH A MESSAGE
OR IMAGE.

LEAVE VERY LITTLE
SPACE WITHOUT
COLOR OR DESIGN.



KEEP IN MIND, THE
MORE DETAILS
(COLORS & SHAPES)
YOU INCLUDE, THE
MORE CHALLENGING
THE PUZZLE WILL BE.



MISSISSIPPI
MUSEUM OF
ART

If you don't want to draw your own design, choose a large image from a magazine or a finished coloring sheet!



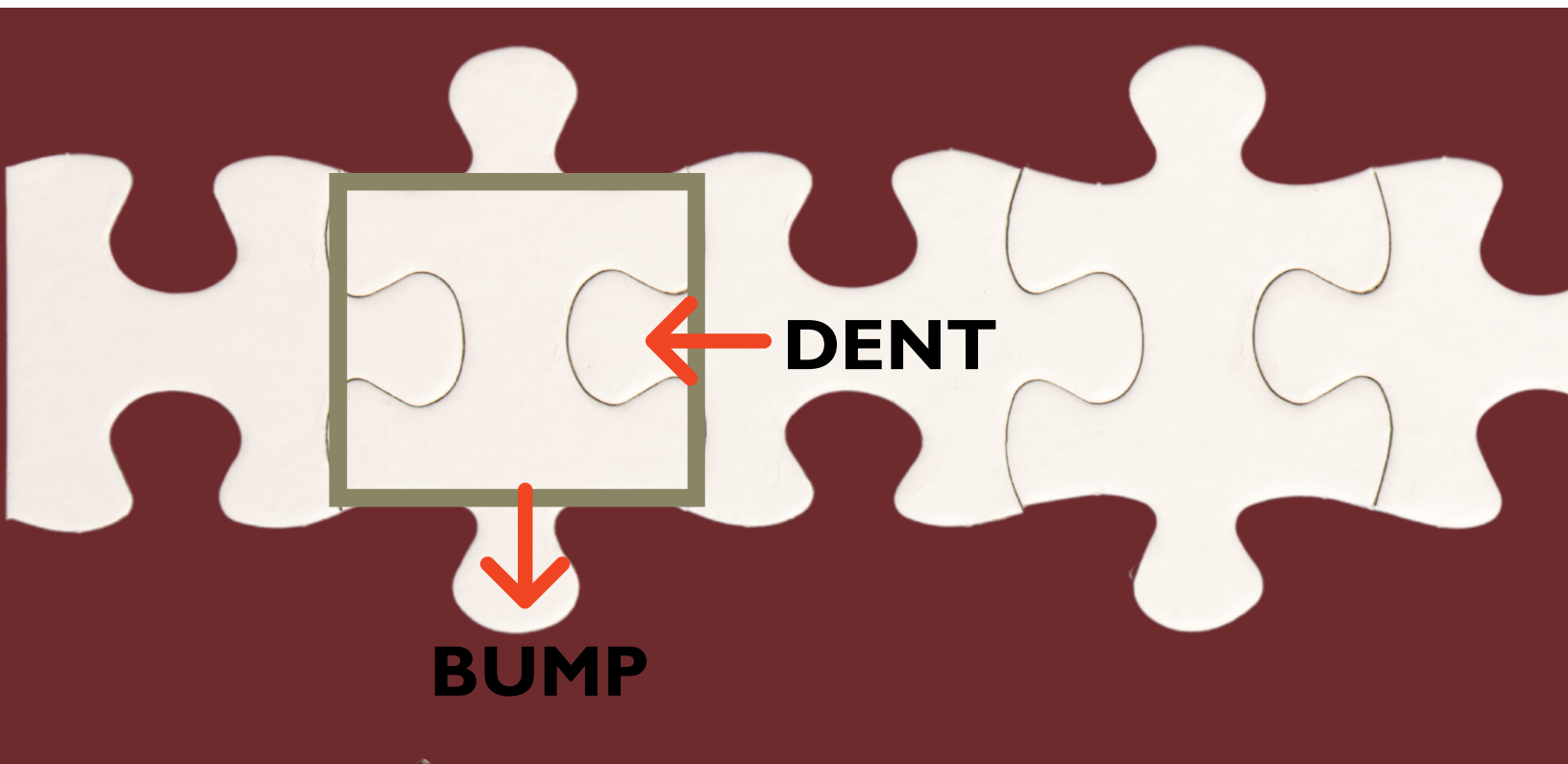
NEXT

GLUE YOUR DESIGN OR IMAGE TO THE CARDBOARD. TRIM TO FIT YOUR DESIGN.



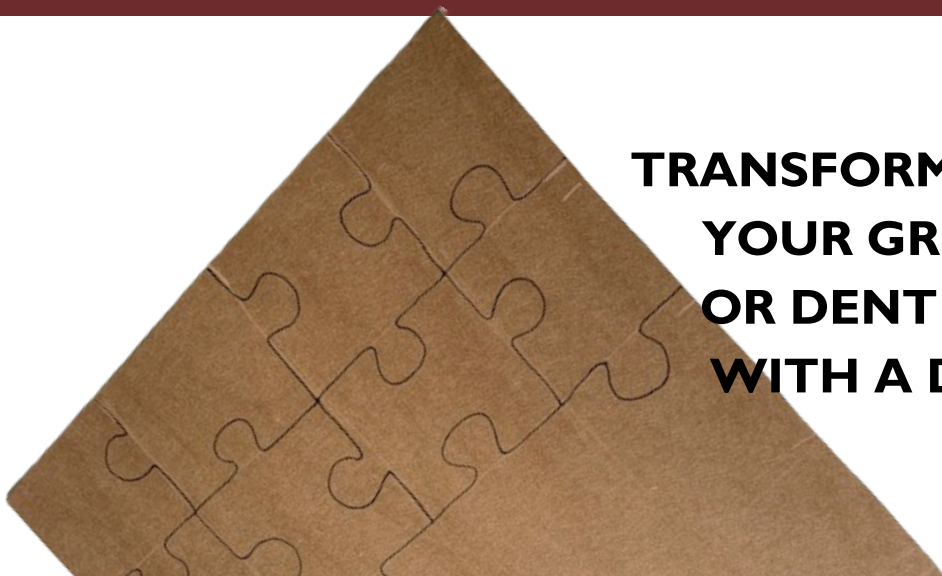
NEXT

ON THE BACK OF THE CARDBOARD, LIGHTLY DRAW A GRID OF LINES.



THEN

TRANSFORM EACH RECTANGLE IN YOUR GRID BY ADDING A BUMP OR DENT TO EACH SIDE. TRACE WITH A DARK PEN OR MARKER.





FINALLY

CUT OUT THE PIECES!

START PUZZLIN'!



**SHARE YOUR
PUZZLES WITH US!**

#MMAEDU

#MMAEDUATHOME

#MUSEUMFROMHOME

#THEMUSEUMSCHOOLMMA



**MISSISSIPPI
MUSEUM OF
ART**