



IMPRESSIONIST TRIVIA

WITH ARTWORKS FROM

*VAN GOGH,
MONET, DEGAS,
AND THEIR TIMES*



MISSISSIPPI
MUSEUM OF
ART



WHICH IMPRESSIONIST PAINTED THIS?

- A. ALFRED SISLEY
- B. CAMILLE PISSARRO
- C. CLAUDE MONET
- D. BERTHE MORISOT

ARTWORK FROM
VAN GOGH, MONET, DEGAS, AND THEIR TIMES



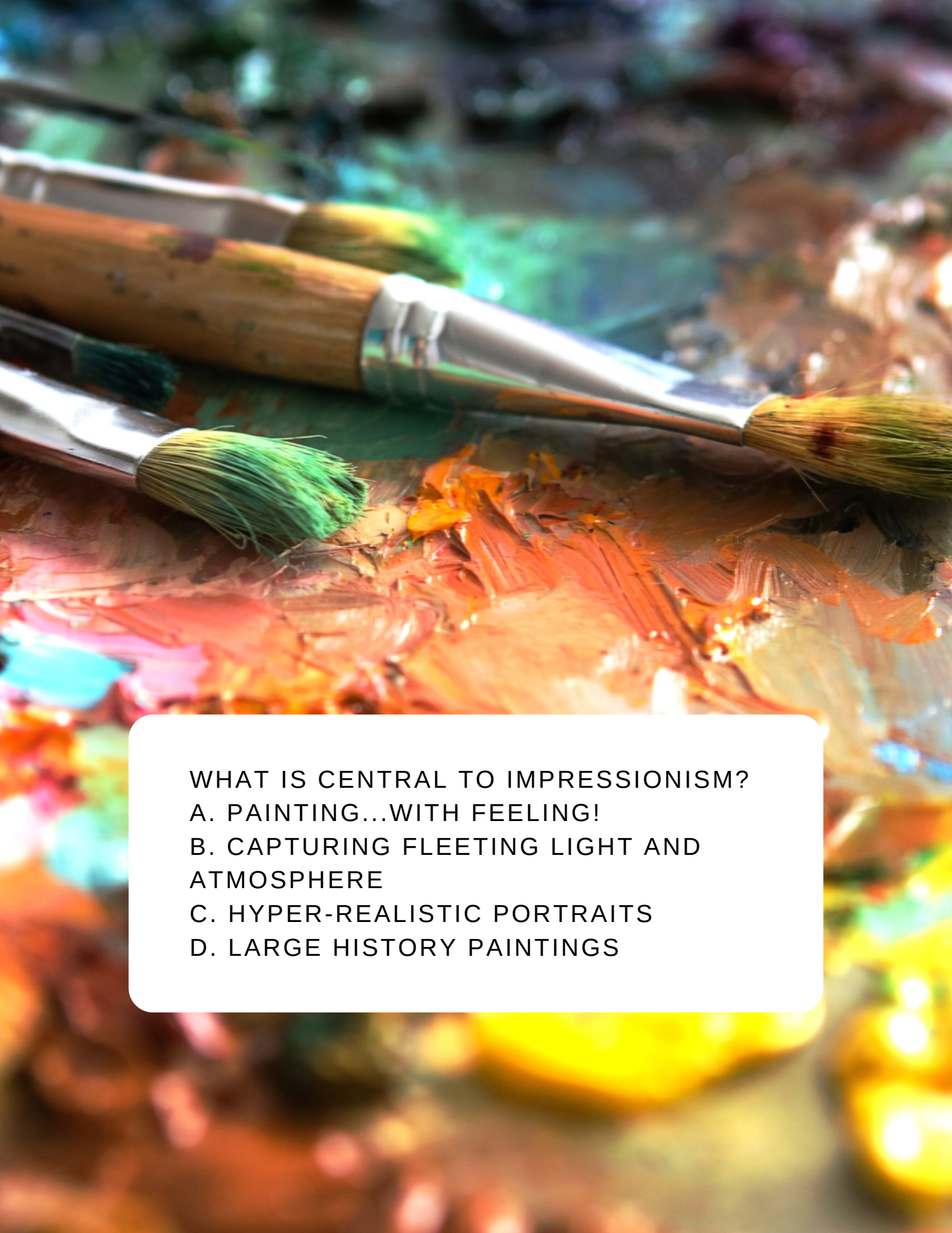
W
A
N
A

BERTHE MORISOT
(1841-1895), YOUNG
WOMAN WATERING A
SHRUB, 1876, OIL ON
CANVAS, 21 1/2 X 18
IN., VIRGINIA MUSEUM
OF FINE ARTS,
RICHMOND.
COLLECTION OF MR.
AND MRS. PAUL
MELLON, 83.40. ©
VIRGINIA MUSEUM OF
FINE ARTS

d

BERTHE MORISOT WAS A
RESPECTED ARTIST DURING
HER TIME, EXHIBITING IN
THE PARIS SALON AND
LATER JOINING THE
IMPRESSIONISTS FOR SEVEN
OF THEIR EIGHT SHOWS.

SHE OFTEN
PAINTED
INTIMATE,
DOMESTIC
SCENES FROM
HER DAILY LIFE!



WHAT IS CENTRAL TO IMPRESSIONISM?
A. PAINTING...WITH FEELING!
B. CAPTURING FLEETING LIGHT AND
ATMOSPHERE
C. HYPER-REALISTIC PORTRAITS
D. LARGE HISTORY PAINTINGS

**ARTWORK FROM
VAN GOGH, MONET, DEGAS, AND THEIR TIMES**



STANISLAS LÉPINE (1835-1892), VIEW OF PARIS, BEFORE 1874, OIL ON CANVAS, 13 1/2 X 21 IN., VIRGINIA MUSEUM OF FINE ARTS, RICHMOND. COLLECTION OF MR. AND MRS. PAUL MELLON, 83.30. © VIRGINIA MUSEUM OF FINE ARTS



IN THIS CLOSE-UP,
YOU WILL NOTICE
LOOSE, QUICK
BRUSH STROKES
ON THE WATER
AND THE WALL
BEHIND THE
BOATERS.

b

**AS A RESULT OF TRYING TO CAPTURE THE
FLEETING ESSENCE OF LIGHT AND ATMOSPHERE,
THE IMPRESSIONISTS' WORKS WERE
CHARACTERISTICALLY "PAINTERLY," MEANING
YOU COULD SEE THE LOOSE PAINT STROKES.**

**PAINTING EN PLEIN AIR:
THE ACT OF PAINTING OUTSIDE.**

FOR EXAMPLE

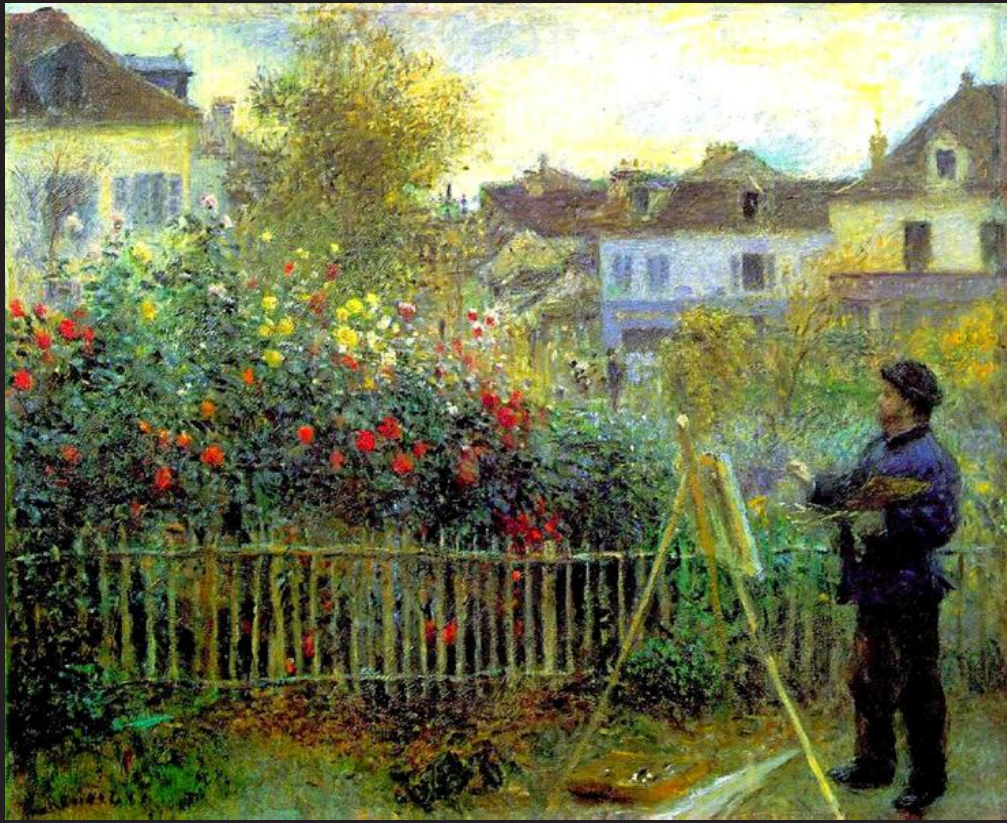


John Singer Sargent (1856-1925), Claude Monet Painting by the Edge of Wood, 1885, oil on canvas, 540 x 648 mm,

Photo © Tate, CC-BY-NC-ND 3.0 (Unported)

**THE 19TH C. INVENTION OF ____ MADE
PAINTING "EN PLEIN AIR" POSSIBLE.**

- A. TIN TUBE PAINTS
- B. THE PORTABLE TOTE BAG
- C. STANDING EASELS
- D. ALLERGY MEDICINE



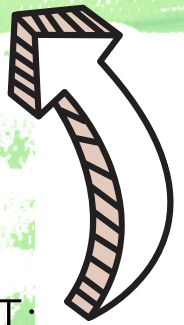
Pierre-Auguste Renoir, Monet Painting in His Garden at Argenteuil, 1873, Oil on canvas, Wadsworth Atheneum, Hartford, CT, 61 x 50 cm, Public Domain.

Until tin paint tubes were invented in 1841, paints were hand-mixed and stored by artists in pig bladders.

"

An artist, under pain of oblivion, must have confidence in himself, and listen only to his real master: Nature.

"



HINT:
They also said
this quote!

**CAN YOU GUESS THE ARTIST
WHO PAINTED THIS WORK?**

- A. EDGAR DEGAS
- B. GEORGES SEURAT
- C. PIERRE-AUGUSTE RENOIR
- D. MARY CASSATT

ARTWORK FROM
VAN GOGH, MONET, DEGAS, AND THEIR TIMES

AWA

e



PENSIVE
IS A CLASSIC EXAMPLE
OF RENOIR'S DARING
APPROACH TO
SUBJECT MATTER AND
FREE BRUSHWORK IN
THE MID-1870S.

PIERRE-AUGUSTE RENOIR (1841-1919), PENSIVE (LA
SONGEUSE), 1875, OIL ON PAPER ON CANVAS, 26 1/4 X 23
3/8 IN., VIRGINIA MUSEUM OF FINE ARTS, RICHMOND.
COLLECTION OF MR. AND MRS. PAUL MELLON, 83.47.
©VIRGINIA MUSEUM OF FINE ARTS

FUN FACT: IT WAS QUITE UNUSUAL
TO PORTRAY SOMEONE FROM
BEHIND LIKE THIS!



Thanks for playing!

You can find more trivia on our website!
To view more artworks from this exhibition,
check out the Mississippi Museum of Art app!



MISSISSIPPI
MUSEUM OF
ART